

ACCESS DIRECT



Communications Offers & Insights

Summer 2016

In This Issue

[Disaster Recovery](#)

[Upcoming Events](#)

[ADTRAN](#)

[AFL](#)

[CommScope](#)

[Comtrend](#)

[PREMIER](#)

[Telect](#)

[ZyXEL](#)



We've Got You Covered

Severe weather season is here. When the weather is unpredictable, rely on KGP Logistics! We make the process of responding to natural disasters easy. Our after-hours support provides a single point of contact for the distribution and integration of services to put the resources you need in place quickly.

Save KGP Logistics into your contacts for immediate disaster recovery assistance: 800-755-1950.

Plus, we offer all the tools and products commonly needed in times of emergency. Check out our [Disaster Recovery Product list](#) and contact us to help you be prepared for those unexpected emergencies.

800-755-1950

http://www.kgplogistics.com/docs/kgp_disaster_relief.pdf

Upcoming Events – 2016



ISE Expo



SCTE Cable-Tec Expo



HetNet Expo

ADTRAN®

OPEN SOLUTIONS, ENDLESS POSSIBILITIES

The future network will be rooted in SDN and NFV, creating a more open, programmable and scalable network than ever before. Service providers are searching for ways to transition from today's hardware-centric architectures to an open framework of cloud-based software applications. Data Center principles are laying the foundation for the network of tomorrow.

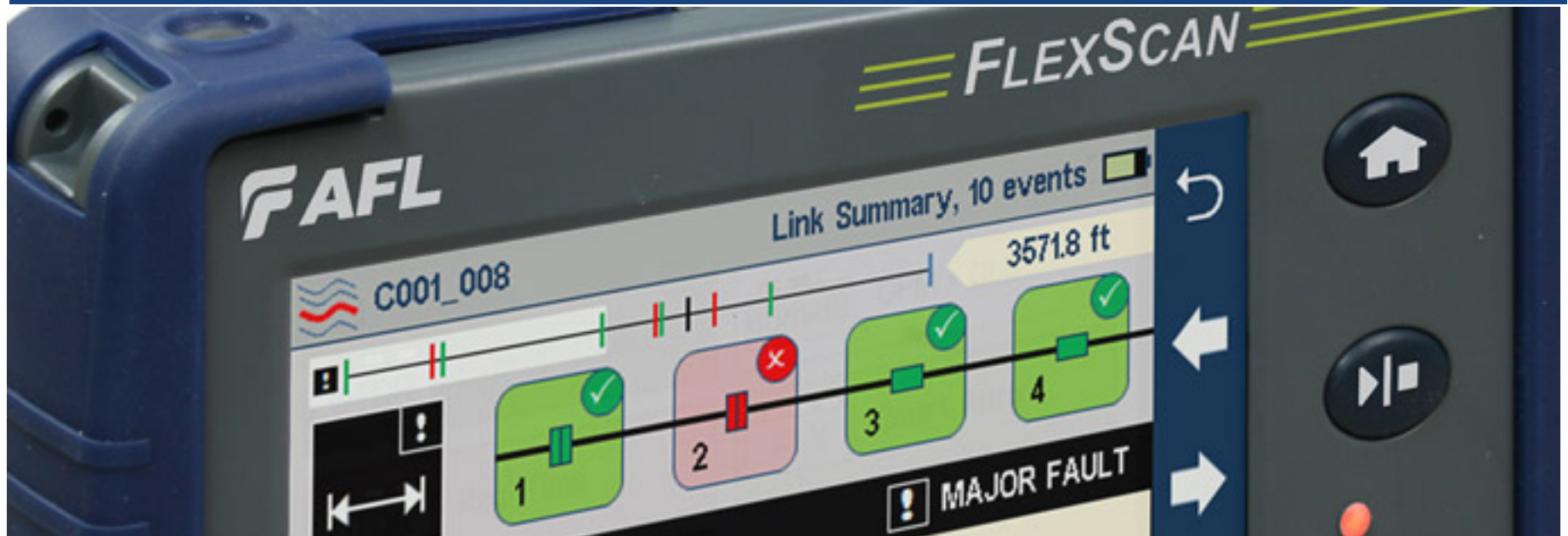
To learn more, visit adtran.com/sdn-nfv

ADTRAN®

BRINGING THE WORLD TOGETHER

Contact KGP Logistics to learn more about ADTRAN products
800-755-1950 or visit www.kgplogistics.com





FlexScan OTDR with SmartAuto™ and LinkMap™

Pocket-sized, Performance-packed, User-friendly, and Affordable

FlexScan OTDRs enable both novice and expert technicians to quickly and reliably troubleshoot optical networks or fully characterize newly installed or repaired networks. Using FlexScan's innovative SmartAuto mode, multiple OTDR scans quickly and accurately detect, locate, identify and measure network components and faults. After applying industry-standard or user-set pass/fail criteria, the characterized network is displayed using FlexScan's intuitive, icon-based LinkMap view.

FlexScan automates test setup, shortens test time and simplifies results interpretation, improving efficiency and reducing the cost of test. Acquired results may be stored internally or externally. Internally stored results are easily accessed via USB, Bluetooth or WiFi.

With optional connector inspection, integrated source, power meter and VFL, FlexScan offers an all-in one solution, ensuring technicians have everything they need to locate and resolve optical network issues. Uploaded results may be viewed and reports may be generated using the included Windows-compatible TRM® 2.0 Test Results Manager software.

[Click Here](#) to learn more

Contact KGP Logistics to learn more about AFL products
800-755-1950 or visit www.kgplogistics.com



COMMSCOPE®



Deploy High Quality FTTH Networks Faster and at Lower Cost

© 2015 CommScope, Inc. All rights reserved. AD-110055-EN

Fiber indexing is a novel approach to FTTH network design.

CommScope's pre-connectorized plug-and-play solution allows you to:

- Deploy fiber up to 75% faster
- Reduce the amount of cable required by up to 70%
- Eliminate the need for fiber splicing

Contact KGP Logistics to learn more about CommScope solutions

800-755-1950 or visit www.kgplogistics.com

How? By changing from a star to a daisy-chain topology for connecting service terminals, and consolidating functionality into the service terminal. By using hardened service terminals with hardened multi-fiber connectors, this architecture combines the advantages of a daisy-chain topology with plug-and-play connectivity.



What does the *Most Advanced Gateway* look like today?



Quantenna

- Cutting edge 11AC Wave 2 WiFi
- Blistering 4x4 MU-MIMO
- Up to 1733Mbps on 5GHz

Broadcom

- Dual core 1GHz processor for maximum performance
- VDSL Profile 35b
- USB 3.0

Exactly like this.

Upgrade to the latest 11AC Wireless Technology

Optimized IPTV | No Lag/Buffer Times | Extreme Wireless Coverage



NexusLink 3120

- Bonded A/VDSL Gateway
- 400mW High Power AC2050
- 5 Gigabit Ethernet Ports
- TR-069



NexusLink 3240

- Bonded A/VDSL Gateway w/ VoIP
- 400mW High Power AC2050
- 5 Gigabit Ethernet Ports, 2 FXS
- TR-069



WR-6895

- Ethernet/FTTH-Ready Gateway
- 400mW High Power AC2050
- 5 Gigabit Ethernet Ports
- TR-069

To view our complete lineup of 11AC Gateways, [click here](#).

Call KGP Logistics for samples: (800) 755-1950



MoCA Broadband Coax Splitters - 5-1675 MHz

PREMIER MoCA 2.0 optimized coax splitters provide the performance to exceed the high speed networking capacity and reliability required for high definition video

streaming, internet services, and gaming in residential and multi-dwelling applications.

Specifications

- 5-1675 MHz Bandwidth.
- MoCA 2.0 Compliant
- 2nd Harmonics/ Typical -55 dBmv, Min -45 dBmv.
- Operation Temperature of -40°C to +60°C.
- Meets or exceeds ANSI/SCTE 153 2008 for outdoor use and environmental and mechanical requirements.
- Corrosion resistance, 1000 Hours of salt spray per ANSI/SCTE 143 2007.
- F connector, SCTE compliant IPS-SP-400.
- Meets or exceeds SCTE IPS SP 217 R02.

Product Information



CATV Digital Coax Splitter - 5-1000 MHz

PREMIER SCTE compliant CATV digital splitters provide the performance to exceed the high speed networking capacity and reliability required for high definition video streaming, internet services, and gaming in residential and multi-dwelling applications.

Specifications

- 5-1000 MHz Bandwidth.
- SCTE Compliant.
- Operation temperature of -40°C to +60°C.
- Meets or exceeds ANSI/SCTE 153 2008 for outdoor use and environmental and mechanical requirements.
- Corrosion resistance, 1000 Hours of salt spray per ANSI/SCTE 143 2007.
- F connector, SCTE compliant IPS-SP-400.
- Meets or exceeds SCTE IPS SP 217 R02.

Product Information



PREMIER products are available exclusively through KGP Logistics. Contact **800-755-1950** today!



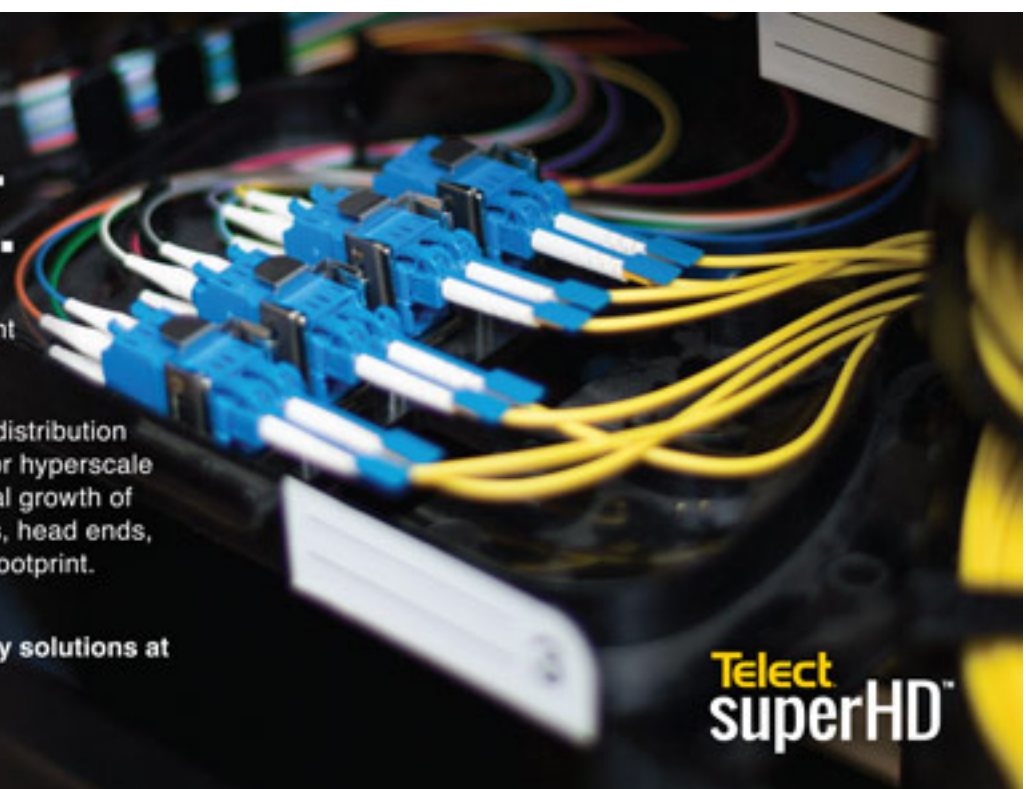
HIGHEST DENSITY. SMALLEST FOOTPRINT.

In today's hyperscale network environments, product footprint and scalability are more critical than ever.

The Telect superHD™ is a breakthrough architecture in fiber distribution frames that offers unprecedented fiber termination density for hyperscale data applications. The superHD fits the needs for exponential growth of the data processed by data centers, mobile switching offices, head ends, and central offices while reducing costs within the smallest footprint.

Learn more about Telect's superHD and other high density solutions at www.telect.com/learn/hd

☎ 509.926.6000 ✉ GETINFO@TELECT.COM



Telect
superHD™

[Product Information](#)

Contact KGP Logistics to learn more about Telect superHD™ products
800-755-1950 or visit www.kgplogistics.com



ZyXEL - 11AC Copper & Fiber Networking Solutions

Let's make

Remote Management ▼

Revenue Generation

Wi-Fi Analytics

Network Visibility

Customer Support

simpler.

› zyxel.us/remotemanagement



AC1600 VDSL2
Combo Gateway
VMG3925

AC2050 Bonded VDSL2
Combo Gateway
VMG4825
VMG9823 (VoIP)

AC2200 Wi-Fi Router with
Gigabit Ethernet, TR-069
and Optimized for IPTV
EMG3425

AC1600 VDSL2 Combo Gateway - [VMG3925](#)

AC2050 Bonded VDSL2 Combo Gateway - [VMG4825](#) | [VMG9823 \(VoIP\)](#)

AC2200 Wi-Fi Router with Gigabit Ethernet, TR-069 and Optimized for IPTV - [EMG3425](#)

» Contact KGP Logistics at 800-755-1950 or visit www.kgplogistics.com

www.zyxel.com/us



© 2016 KGP Logistics LLC. All rights reserved. The name KGP Logistics, the logo and all other KGP marks are trademarks of

KGP Logistics is certified to the

KGP Logistics LLC. All other marks are property of their respective owners.
KGP Logistics | 3305 Hwy 60 West | Faribault, MN 55021 | 800.755.1950 | www.kgplogistics.com



[Click here to edit your subscription preferences](#)